

HOW MANY PEOPLE USE ICE

Relatively few Australians use methamphetamines, such as ice

% Australians who reported using methamphetamines:

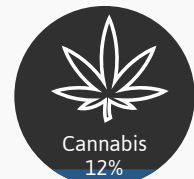
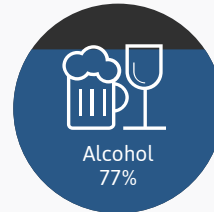


Haven't used methamphetamines **94%**

Used in their lifetime **< 6%**

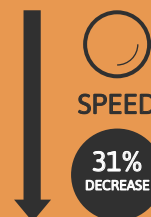
Used in the last year **< 2%**

% Australians who reported using the following substances:



Source: 2016 National Drug Strategy Household survey

Among those who do use methamphetamine, ice is becoming a more popular form of the drug



Source: 2019 National Drug Strategy Household survey

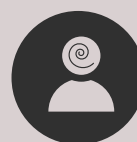
A number of data sources indicate harms related to ice use have increased, including methamphetamine-related:



helpline calls



drug and alcohol treatment
episodes and hospital admissions



Dependence and psychosis



Deaths

Last updated: Wednesday, 16th July 2022